

PCMT Town Hall

Provider Technical Assistance

April 13, 2026, 11:00 am – 12:30 pm



DEPARTMENT OF
**PUBLIC HEALTH &
HUMAN SERVICES**

Purpose of Today's Town Hall

- Review key concepts of the PCMT Model
- Inform Providers about PCMT Technical Assistance Program
- Explain the value of Provider TA
- Provide instructions to sign up for Provider TA
- Q & A



Primary Care Montana (PCMT)



DEPARTMENT OF
PUBLIC HEALTH &
HUMAN SERVICES

PCMT

- Consolidates 3 prior Medicaid Primary Care Case Management (PCCM) models into one model
- Pays per-member-per-month care coordination fees
- Emphasizes preventive care, care coordination, and continuity
- Supports gradual movement toward value-based care

Tier 1 and Tier 2
Launch July 2026



Why a Tiered Model?

- Recognizes differences
 - Readiness
 - Practice size
 - Staffing
 - Infrastructure
- Allow practices to enter at a realistic starting point
- Reduce barriers to participation
- Create a clear path for growth over time

Practices are ***not*** expected to start at the same place or advance on the same schedule.



PCMT Tier Structure

- **Tier 1:** Foundational primary care and prevention
- **Tier 2:** Transitions of care post-hospitalization and emergency department (ED)
- **Tier 3:** Advanced care management and shared savings (2027 projected phased in date)

*Providers may start at different tiers based on readiness



Tier 1 and Tier 2 Differentiators

Tier 1

- Preventive care
- Closing care gaps
- Practice capabilities aligned with core medical home concepts
- Performance targets:
 - 3 of 12 quality measures

Tier 2

- Tier 1 requirements
- Post-hospitalization & ED follow-up
- Medication reconciliation
- Transitions of care workflows
- Performance targets
 - 14-day follow-up visits
 - Readmission rate

Practices must meet Tier 1 expectations to participate in Tier 2



How Payment Fits Into the Tiers

Monthly care coordination payments*:

- **Tier 1:** \$6 PMPM to support foundational care coordination
- **Tier 2:** \$11 PMPM to support transitions of care activities

*Payments are tied to participation and performance expectations



PCMT Provider Technical Assistance



DEPARTMENT OF
PUBLIC HEALTH &
HUMAN SERVICES

Provider TA from Health Management Associates (HMA)



Michele Bosworth, MD
Physician Principal

TA Program Director



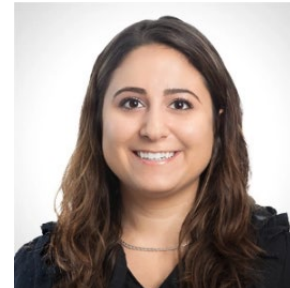
Kelli Stannard, BSN, RN
Associate Principal

Tier 1 Lead



Brittany LaBarreare, MBA, BSN, RN
Principal

Tier 2 Lead



Samantha Di Paola McGann, MHA, PMP
Senior Consultant

Project Manager Lead



Art Jones, MD
Physician Principal

Program Advisor



Jodi Pekkala, MPH
Managing Director, Care Delivery and Quality Improvement

Program Advisor



Value of Provider TA

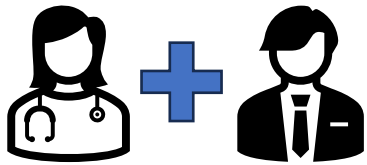
TA is designed to:

- **Reduce** administrative burden
- **Support** practical, applicable workflow change
- **Reflect** rural, Tribal, and small practice realities
- Help providers **succeed** and progress over time

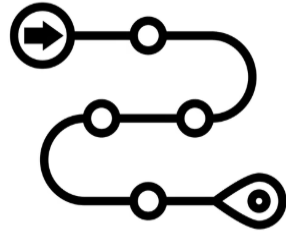
Ultimately, TA will help you meet PCMT Tier requirements to enable advancement through the Tiers, improve quality of care, and maximize PMPM payment opportunities.



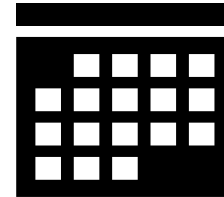
What PCMT Provider TA Looks Like



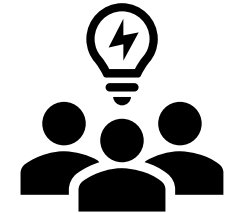
Connection with a practice coach & capability assessment



Support is aligned with your specific needs to meet Tier 1 and Tier 2 requirements



Monthly meetings during times convenient for your team



Shared Learning via webinar offerings and an in-person event

Practice Capability Assessment & Provider TA Roadmap

Step 0: Enroll and attend the onboarding Webinar

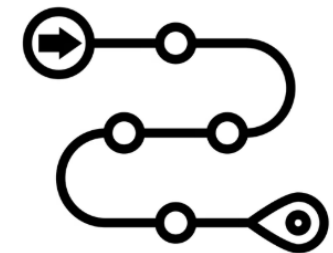
Step 1: Connection with a Coach

Step 2: Capability Assessment

- Workflows tied to Tier 1 and Tier 2 expectations
- Staffing, access, care coordination, and data use

Practices receive:

- Identification of strengths and gaps
- Practice-specific TA Roadmap with milestones



1:1 Coaching and Shared Learning



1:1 Practice Coaching

- Capability assessment and Roadmap development
- Refine workflows tied to Tier 1 and Tier 2
- Troubleshoot real-time barriers
- Working sessions to use toolkit resources
- Quality Improvement



Shared Learning

Webinar offerings and 1 in-person event

- Best practices
- Peer learning
- Applied use of tools and templates from toolkit
- Topics aligned to focus areas in Tier requirements
- May include Tier-specific tracks to reflect different starting points



1:1 Coaching

- Translating Tier requirements into day-to-day practice
- Using toolkit resources together (job descriptions, workflows, policies & procedures)
- Facilitating performance improvement of quality measures
- Adjusting pace and scope based on your needs

+

Advancing progress against the TA roadmap



Data Literacy and Performance Improvement

Understand
PCMT
performance
measures



Interpret care gap,
utilization, and
performance
reports



Improve
workflows to
close care gaps



Improve
performance and
quality of care



Sustaining Improvement and Advancing Tiers

TA supports ongoing progress by:

- Applying practical quality improvement approaches
- Reinforcing feasible and realistic improvement goals
- Monitoring progress over time
- Supporting readiness for Tier 2 advancement
- Preparing practices for future Tier 3 participation

Advancement is **based on readiness and demonstrated capability**, not fixed timelines.



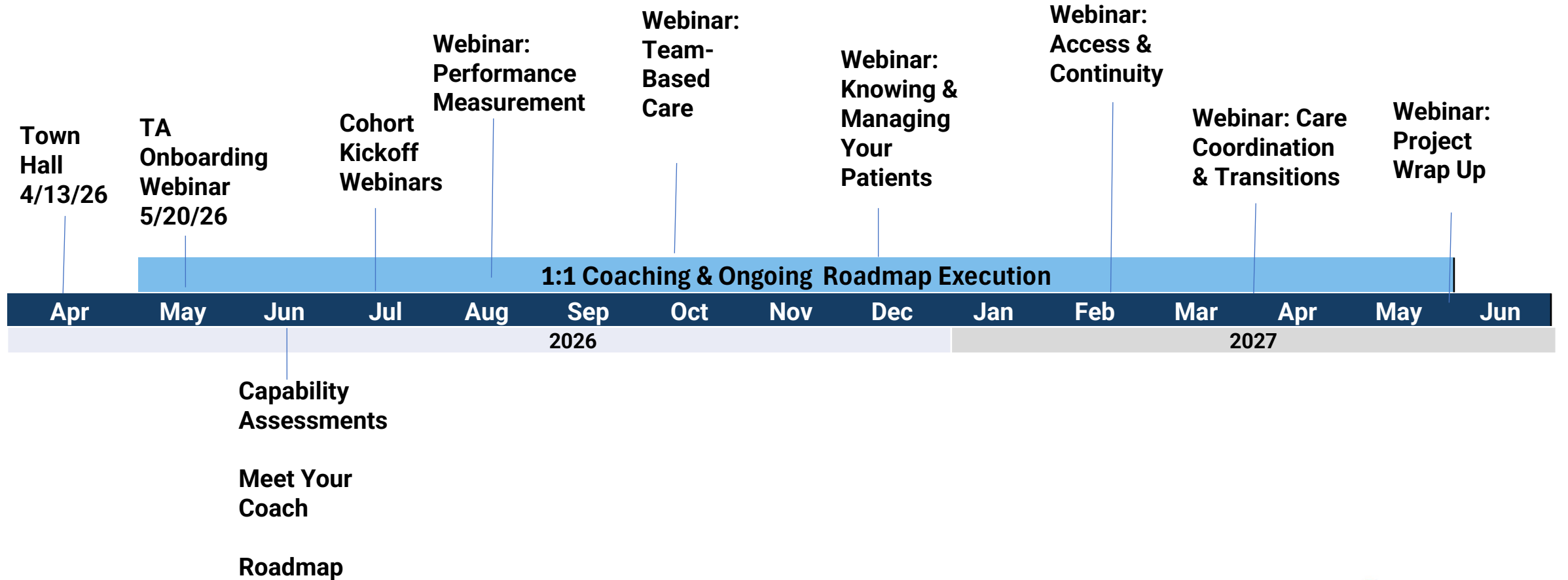
Who Should Participate?

Those responsible for:

- Clinic workflows
- Quality and data
- Physicians and providers
- Nurses and support staff
- Medicaid contracts
- Care management activities



Provider TA Timeline



Next Steps: Getting Started

1. Sign up to participate in Provider TA using the link or QR code below by May 15th.
2. Attend the Onboarding Webinar: **May 20, 12-1pm MT**
3. Get connected to your coach

Sign-up to
Participate



<https://bit.ly/PCMTTA-Register>



Q & A



Conclusion



The Rural Health Transformation Program is supported by the Centers for Medicare and Medicaid Services (CMS) of the U.S. Department of Health and Human Services (HHS) as part of a financial assistance award totaling \$233,509,358.76 with 100 percent funded by CMS/HHS. The contents are those of the author(s) and do not necessarily represent the official views of, nor an endorsement, by CMS/HHS, or the U.S. Government.



DEPARTMENT OF
**PUBLIC HEALTH &
HUMAN SERVICES**