

**PREPARED BY - DEPARTMENT OF
PUBLIC HEALTH AND HUMAN SERVICES
OPERATIONS AND TECHNOLOGY DIVISION**

EXPLANATION OF PROGRAMS

TEMPORARY ASSISTANCE FOR NEEDY FAMILIES (TANF): TANF cash assistance is a program providing temporary financial assistance to needy families. The receipt of TANF cash assistance is limited to 60 months in an adult's lifetime. Temporary financial assistance may be provided to the following families and individuals: Minor Children; Specified relatives with whom the children are living; The minor children's blood-related/adoptive siblings with whom the children are living; Pregnant women in their last trimester who have no other eligible children; and Refugees with minor dependent children.

FOOD STAMPS (FS): This program supplements the food costs of low income households with food stamps issued through EBT (Electronic Benefit Transaction) where a debit card is used for purchasing food products. This data is reported by household (case), recipient and amount. There are two kinds of assistance: Public-Assistance food stamp households in which all members receive income from TANF or SSI. All other food stamps are considered Non-Assistance. Amounts reflect the actual value of benefits issued.

MEDICAL ASSISTANCE (MEDICAID)*: Payment of medical costs for TANF and SSI individuals and families, and for others who qualify. Each person is counted as a case. Cases are unduplicated by county and by state. For example, if a case moves between counties, the case would be counted in both counties, but only once in the state total. For Table 6 "Child" refers to children under 19 years of age and is comprised of TANF, Foster Care, Ribicoff, Poverty level infant and Subsidized adoption children.

LOW INCOME ENERGY ASSISTANCE PROGRAM (LIEAP): Direct payment to fuel vendors for heating on behalf of low income families and senior citizens. The season runs from October 1 through April 30.

VOCATIONAL REHABILITATION: Evaluation, counseling, training, medical and an array of other services to people with physical and mental disabilities which constitutes or results in a substantial impediment to employment and the person requires and can benefit from employment and the person requires and can benefit from vocational rehabilitation services to enter, engage or retain gainful employment.

VISUAL SERVICES: Evaluation, counseling, training, medical treatment, orientation and mobility services, and special low-vision aides to assist the visually impaired become as independent as possible.

CHILD CARE: There are four TANF related child care programs. All of the programs are designed to help TANF eligible or potentially eligible families become or remain self-sufficient. Clients must either be working or attending approved education or training activities and in some cases must pay a co-payment.

CHILDREN'S HEALTH INSURANCE PROGRAM: The Children's Health Insurance Plan (CHIP) is a federal and state funded insurance plan for children up to 19 years old. Household income must meet eligibility requirements. DPHHS pays a premium each month for each child enrolled in CHIP. CHIP covers a wide array of medical services, dental services and eyeglasses for eligible children.

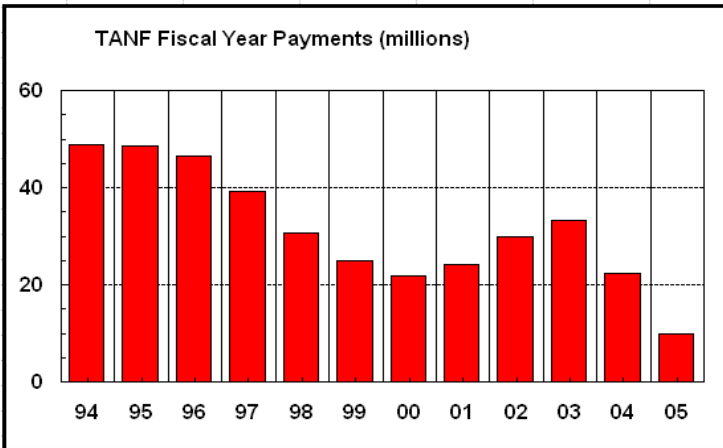
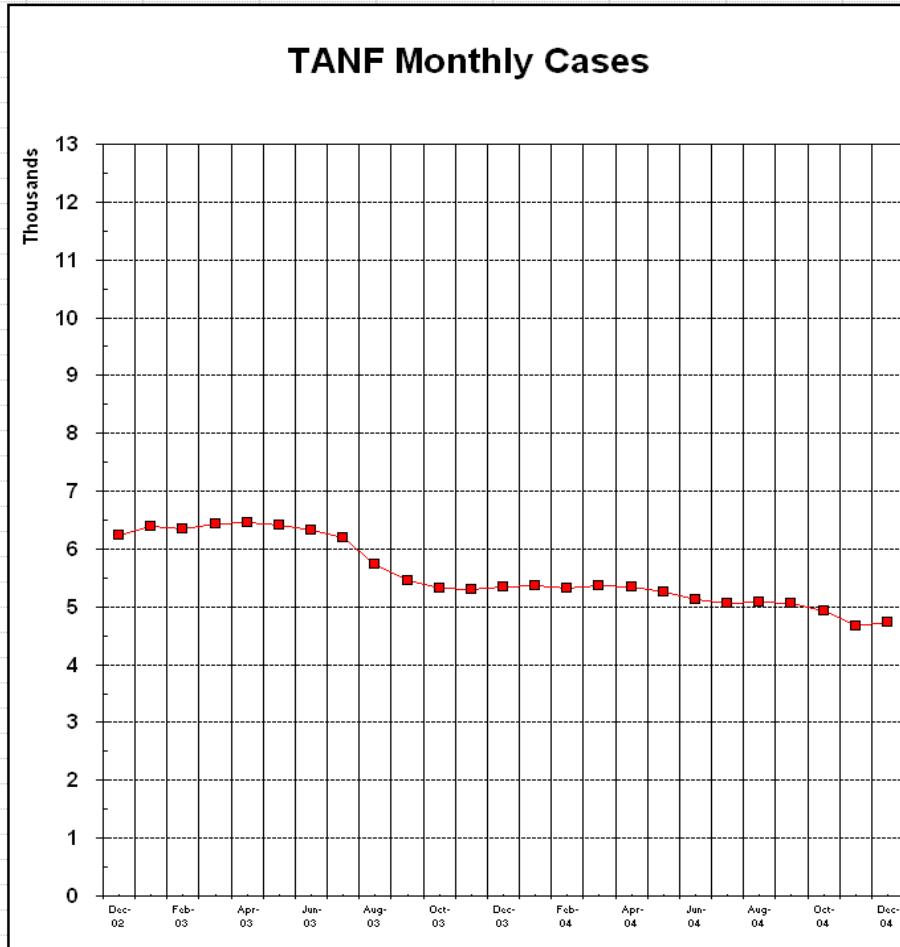
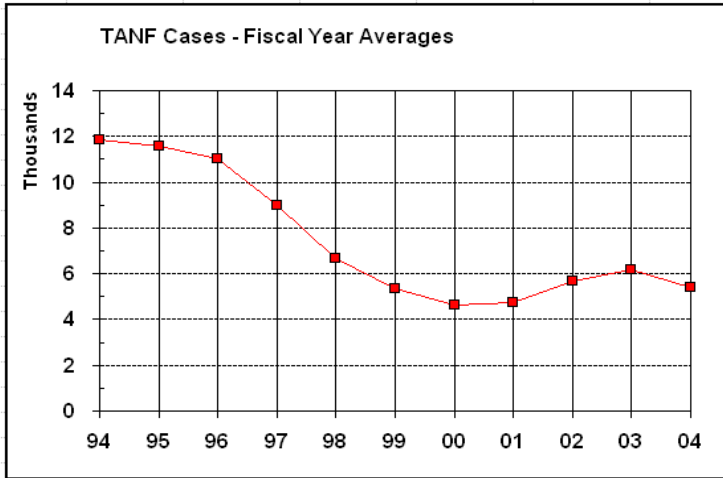
MENTAL HEALTH (MEDICAID): Consumers eligible for services include Medicaid recipients and other low income Montana's with severe mental illness or emotional disturbance.

STATE FUNDED MENTAL HEALTH (NON-MEDICAID): Montana Medicaid and the Montana Mental Health Services Plan provide medically necessary mental health services to eligible individuals. Eligibility for the Mental Health Services plan is established for adults who have an income at or below 150% of the federal poverty level and who have been determined by a licensed mental health professional to have a severe disabling mental illness. Children and adolescents who are eligible for CHIP and who have been determined to have a serious emotional disturbance are eligible for the Mental Health Services Plan. A limited number of children who have been found ineligible for CHIP, but have a family income less than 150% of the federal poverty level and have a serious emotional disturbance may also be enrolled in the Mental Health Services Plan and receive a basic plan of benefits.

* Cases, recipients, and payments are derived from agency payrolls.

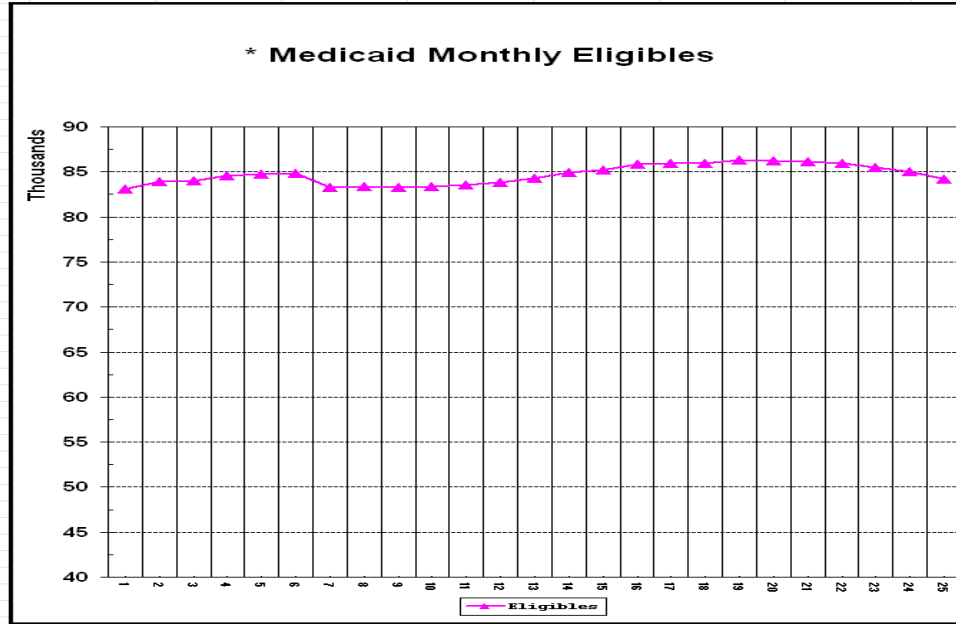
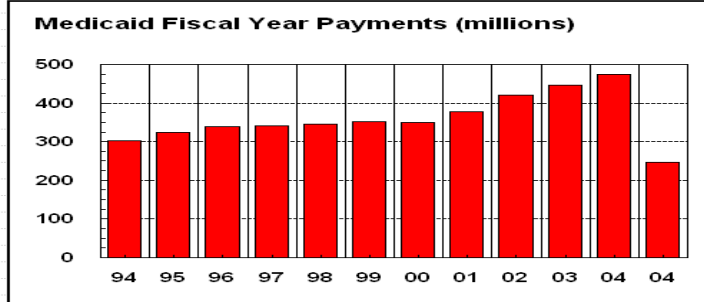
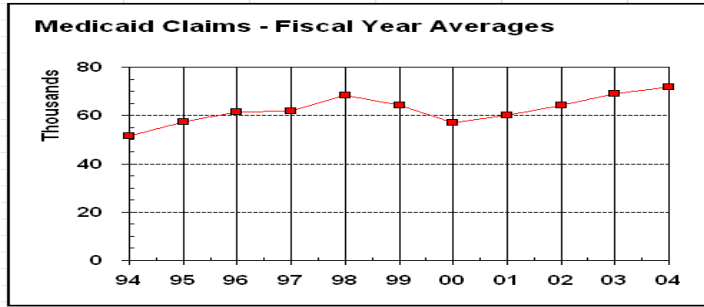
Questions/Address change? Contact Carl McMahon at (406)-444-9358.

TEMPORARY ASSISTANCE FOR NEEDY FAMILIES
Figure 1 **DECEMBER, 2004**



**MEDICAID
Figure 2**

DECEMBER, 2004



FOOD STAMPS
Figure 3

DECEMBER, 2004

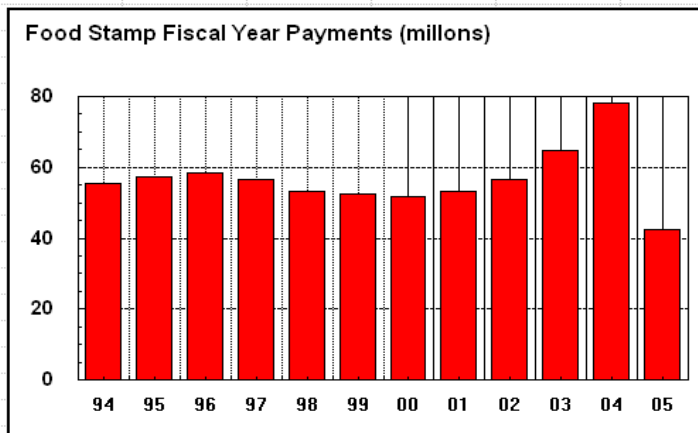
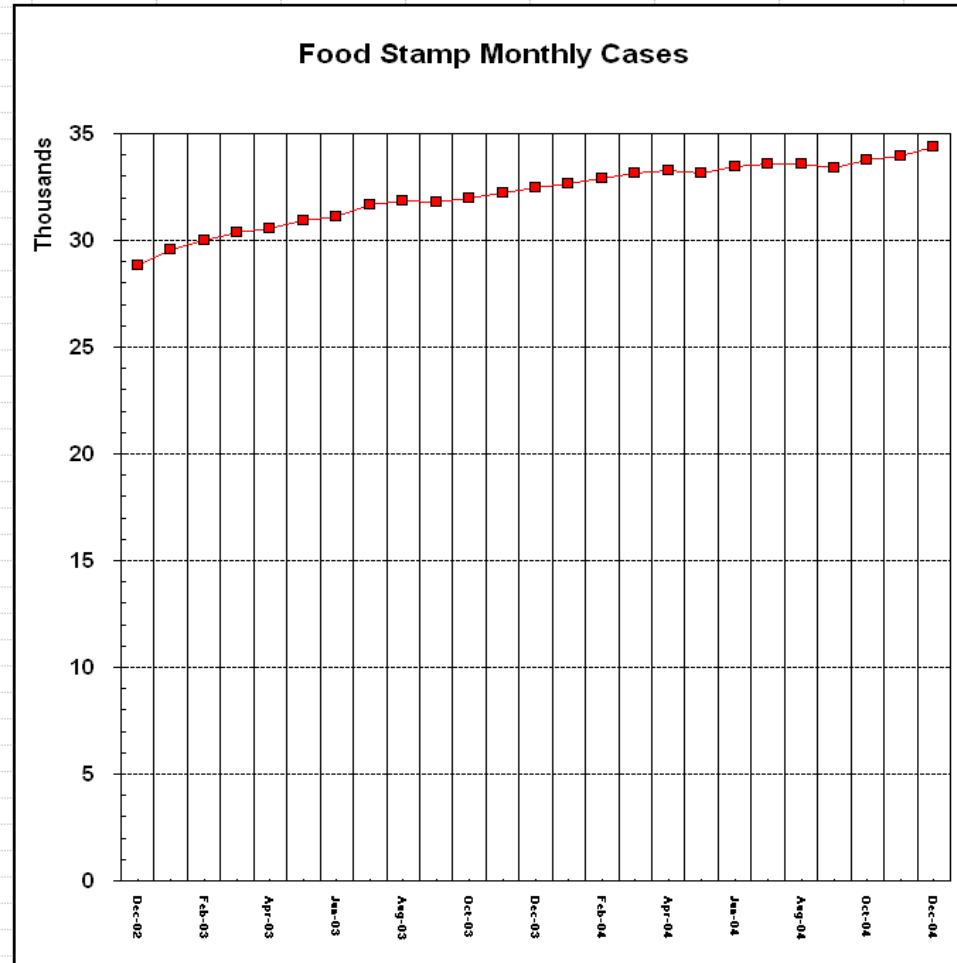
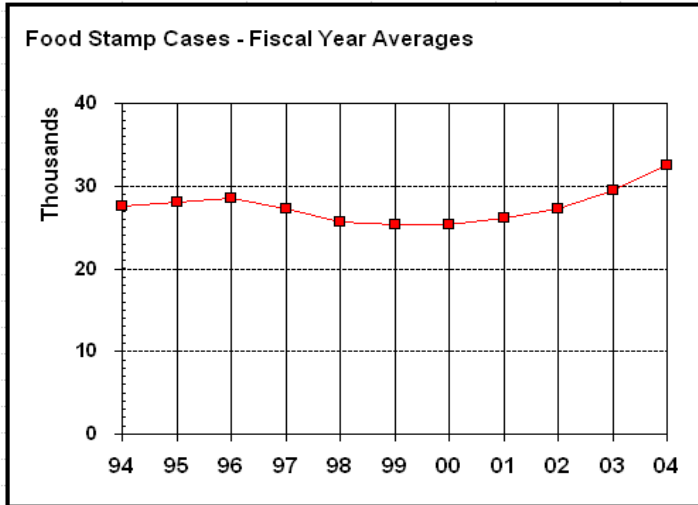


TABLE 1. Summary of Public Assistance and Medical Care
DECEMBER
2004

OBLIGATIONS INCURRED	DECEMBER 2004	NOVEMBER 2004	DECEMBER 2003	PERCENT OF CHANGE	DECEMBER 2003
All Public Assistance	\$56,501,067	\$75,547,015	\$72,444,468	-25.2%	4.3%
FAIM	\$1,580,278	\$1,547,236	\$1,803,199	2.1%	-14.2%
Regular FAIM	\$1,236,027	\$1,227,291	\$1,384,246	0.7%	-11.3%
FAIM Unemployed Parent	\$344,251	\$319,945	\$418,953	7.6%	-23.6%
Medicaid	\$45,996,462	\$65,173,032	\$62,985,063	-29.4%	3.5%
Medicaid Title 19***	\$37,942,476	\$53,769,808	\$52,453,230	-29.4%	2.5%
CHIP	\$1,414,485	\$1,490,023	\$1,450,719	-5.1%	2.7%
State Funded Mental Health	\$255,450	\$338,752	\$415,983	-24.6%	-18.6%
Medicaid Mental Health	\$6,384,052	\$9,574,450	\$8,665,131	-33.3%	10.5%
Food Stamps	\$7,487,017	\$7,389,785	\$6,546,727	1.3%	12.9%
Day Care**	\$1,437,310	\$1,436,962	\$1,109,479	0.0%	29.5%
NUMBER OF CASES					
FAIM	4,730	4,671	5,350	1.3%	-12.7%
Regular FAIM	3,908	3,891	4,368	0.4%	-10.9%
FAIM Unemployed Parent	822	780	982	5.4%	-20.6%
Medicaid	83,956	85,779	78,173	-2.1%	9.7%
Medicaid Title 19	10,890	10,871	10,626	0.2%	2.3%
Childrens Health Insurance Prog	1,425	1,662	2,075	-14.3%	-19.9%
State Funded Mental Health	7,863	9,462	9,273	-16.9%	2.0%
Medicaid Mental Health	34,355	33,921	32,494	1.3%	4.4%
Food Stamps	5,229	5,345	4,758	-2.2%	12.3%
Day Care					
AVERAGE PAYMENTS					
FAIM	\$334.10	\$331.24	\$337.05	0.9%	-1.7%
Regular FAIM	\$316.28	\$315.42	\$316.91	0.3%	-0.5%
FAIM Unemployed Parent	\$418.80	\$410.19	\$426.63	2.1%	-3.9%
Medicaid	\$451.93	\$626.84	\$670.99	-27.9%	-6.6%
Medicaid Title 19	\$217.93	\$217.85	\$201.47	0.0%	8.1%
Food Stamps					
Day Care					
YEAR TO DATE PAYMENTS					
FAIM	\$9,820,825	\$8,240,547	\$11,833,451	19.2%	-30.4%
Regular FAIM	\$7,695,902	\$6,459,875	\$9,163,044	19.1%	-29.5%
FAIM Unemployed Parent	\$2,124,923	\$1,780,672	\$2,670,407	19.3%	-33.3%
Medicaid	\$298,709,702	\$252,713,240	\$281,930,697	18.2%	-10.4%
Medicaid Title 19	\$245,996,697	\$208,054,221	\$233,421,209	18.2%	-10.9%
CHIP	\$8,492,086	\$7,077,601	\$7,408,176	20.0%	-4.5%
State Funded Mental Health	\$1,525,166	\$1,269,716	\$3,323,275	20.1%	-61.8%
Medicaid Mental Health	\$42,695,754	\$36,311,702	\$37,778,037	17.6%	-3.9%
Food Stamps	\$42,491,619	\$35,004,602	\$38,088,520	21.4%	-8.1%
Day Care	\$8,703,101	\$7,265,791	\$7,278,003	19.8%	-0.2%

*Electronic Benefit Transfer (EBT) value

**Day Care cases are unduplicated. Year to Date figures may vary due to cancellations, returns or other adjusting items.

***Medicaid figures for December 2004 are based on 4 weekly payrolls. November 2004 and December 2003 are based on 5 weekly payrolls.