



Montana Early Childhood Project

Montana Early Childhood Project

Early Care and Education Career Development
Advisory Board

Montana State University
Department of Health and Human
Development



A Brief History

- ❖ 1985 – 1994 Various grants to support state and community level support for high quality early childhood services
- ❖ 1995 – 96 Grant from DPHHS to facilitate early care and education career development planning group
- ❖ 1997 - 99 Task force with committees developed key components of the professional development system and launched
- ❖ 2000 – 2011 Advisory Board drives the evolving expansion of scope, partners, cross-sector opportunities , alignment with state & national trends





Montana Early Childhood Project

The Montana Early Care and Education Career Development Advisory Board includes representatives from:

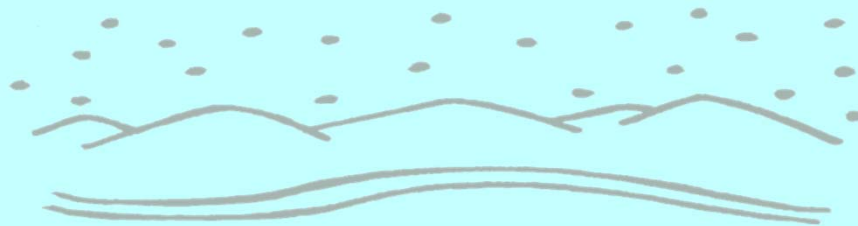
- ❖ MT Child Care Resource and Referral Network
- ❖ MT Head Start Collaboration Project
- ❖ MT Early Childhood Higher Education Consortium
- ❖ MT Center on Inclusion in Early Childhood /Child Care plus+/University of Montana
- ❖ MT Head Start Association
- ❖ MT Association for the Education of Young Children
- ❖ MT Child Care Association
- ❖ MT Dept. of Public Health and Human Services/Early Childhood Services Bureau & Quality Assurance Division
- ❖ MT Office of Public Instruction
- ❖ MT Department of Labor and Industry
- ❖ MT Public Broadcasting Service (PBS)



Our Mission

To improve the quality and availability of early care and education services to young children and their families in Montana. . .

by providing an integrated professional development system to build a knowledgeable, competent and stable workforce.



Our Parts and Pieces



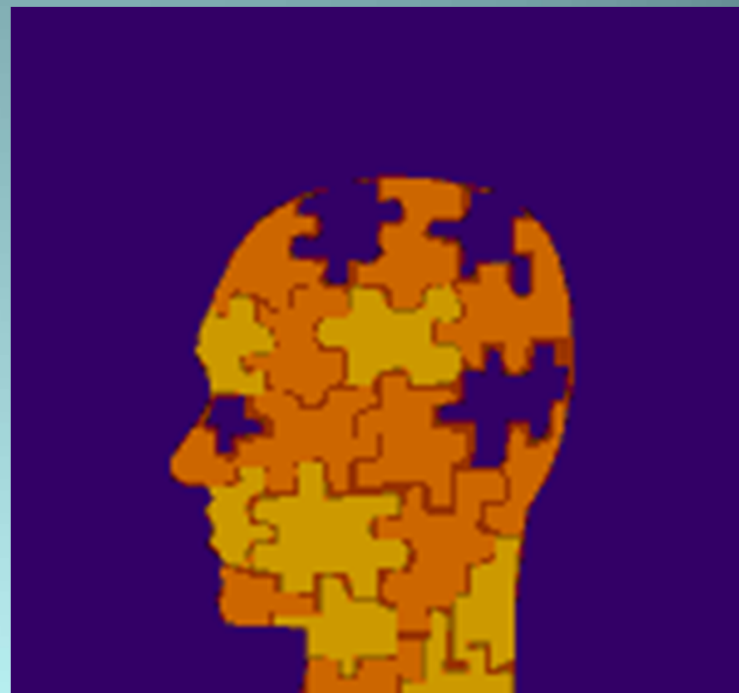
- ❖ The Early Care & Education Knowledge Base
- ❖ The Practitioner Registry / Career Path
- ❖ The Training Approval System & Statewide Training Calendar
- ❖ Professional Development Specialist / Trainer Approval
- ❖ Professional Development Records for direct and support service professionals

- ❖ Early Childhood Education Career Advising
- ❖ Scholarships, Incentives and Registry AWARDS
- ❖ NAEYC Pathways to Cultural Competency Project
- ❖ Statewide training and integration across sectors of Center for Social Emotional Foundations for Early Learning: The Pyramid Model
- ❖ Partnerships for statewide early childhood system planning



Ten Content Areas of the Knowledge Base

- ❖ Personal Dispositions
- ❖ Cultural and Developmental Diversity
- ❖ Health, Safety and Nutrition
- ❖ Child Growth and Development
- ❖ Family and Community Partnerships
- ❖ Environmental Design
- ❖ Professionalism
- ❖ Child Guidance
- ❖ Curriculum
- ❖ Observation and Assessment
- ❖ Program Management



The Career Path

Framework of ten (10) levels:

- ❖ Inclusive of practitioners in a variety of settings (child care, Head Start, Early Head Start, support services, etc.)
- ❖ Recognizes, honors and outlines steps to increased professionalism & certification
- ❖ Practitioners are placed at a level on The Registry based upon verified training and education & receive a certificate



Statewide Training Calendar

- ❖ Lists approved training opportunities
- ❖ Updates daily
- ❖ Easy to search by content, location, type, & format



The Statewide Training Calendar also lists upcoming conferences, courses and special events

www.mtecpc.org

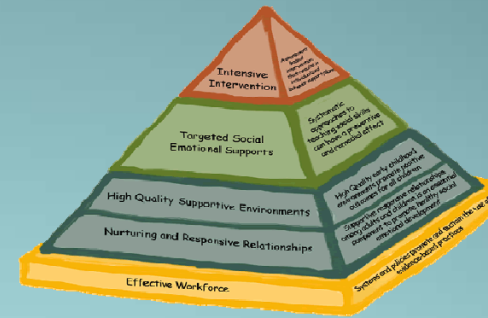


Partnerships for Collaboration in Professional Development Emerge and Grow. . . Some Highlights

Head Start Collaboration
Support for professional
development system start-up
system



Part C Early Intervention Services
Provided CSEFEL Pyramid Model &
Strengths –Based Coaching
training in collaboration with ECP



OPI -- Early Childhood
Partnership for
Professional Development

- CSEFEL The Pyramid Model/EC MBI/RtI
- CELL
- Project REAL

The Early Childhood
Professional Development
Arena will be further
enhanced and expanded . . .

Who is missing?

How do our goals align?

What do we need to know?

Where do we start?

When can we begin to plan?



Early Care and Education Career Development Advisory Board Lessons Learned. . .



- ❖ Build new relationships across sectors of early childhood services
- ❖ Share resources and standards
- ❖ Expand accessibility by opening doors
- ❖ Listen to each other
- ❖ Be innovative and respectful
- ❖ Identify common principles and practices for young children and their families in Montana



Questions?

Comments?

Hopes and Fears?





Montana Early Childhood Project

The Montana Early Childhood Project

Montana State University
PO Box 173540
Bozeman, MT 59717-3540

Phone: 406.994.4746
800.213.6310

Email: ecp@montana.edu

Fax: 406.994.7555

www.mtecp.org

