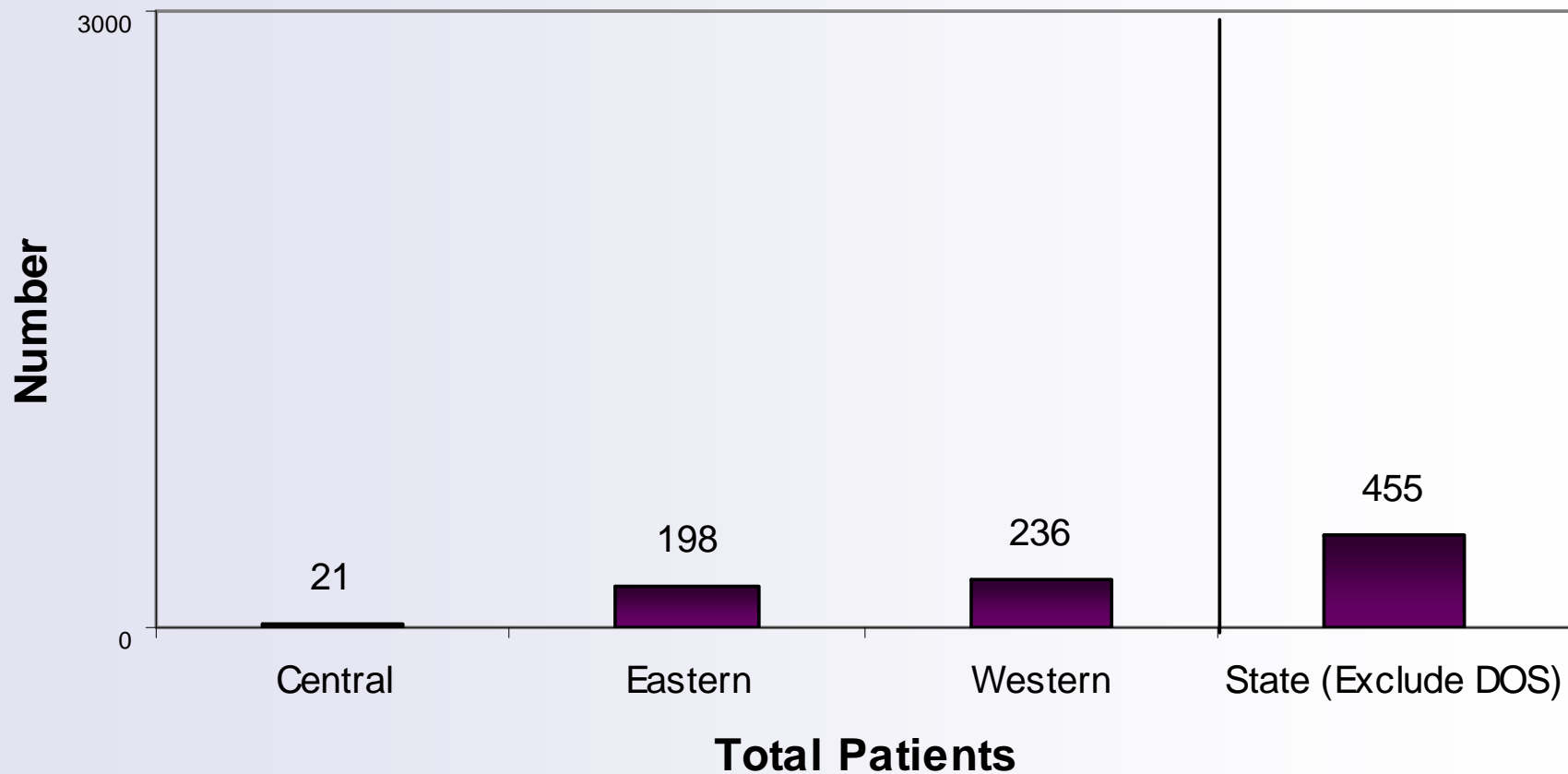




# State Trauma Care Committee Report

January 1 – March 31, 2007

# Total Patients



**N = 455 for qtr**

**MT STCC 1<sup>st</sup> Qtr 2007**

# First Quarter Data Missing

- Central: Benefis East
- Western: Community Medical Center

# 1<sup>st</sup> Quarter Patient Demographics

## N= 455

81% ages 10-64; 7% < 10; 12% > 65

80% White; 12% Native; 6% ND

66% Male 33% Female

# 1<sup>st</sup> Quarter Patient Demographics

## N= 455

87% Blunt

7% Penetrating

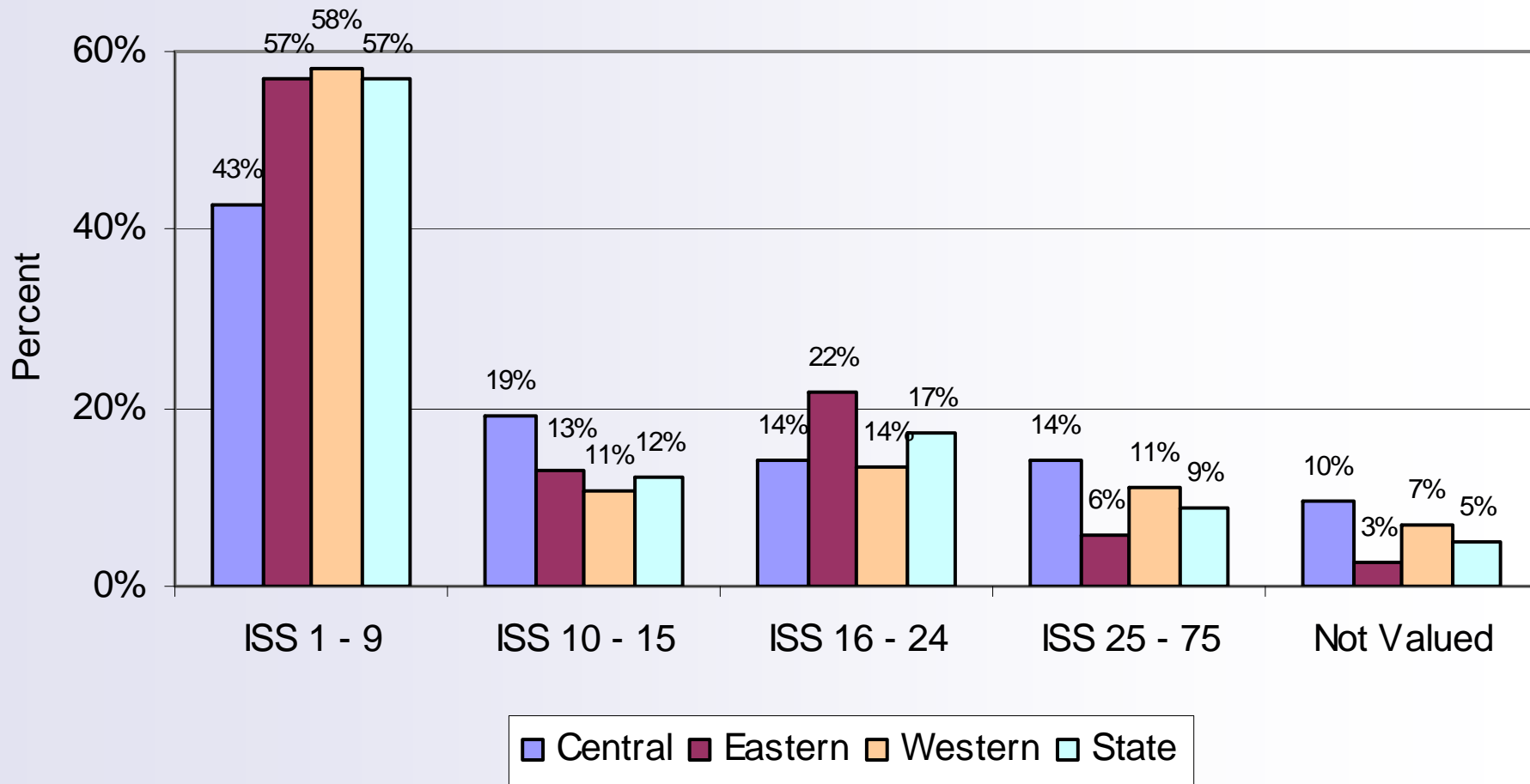
46% MVC

22% Falls

51% Street/Highway

19% Home

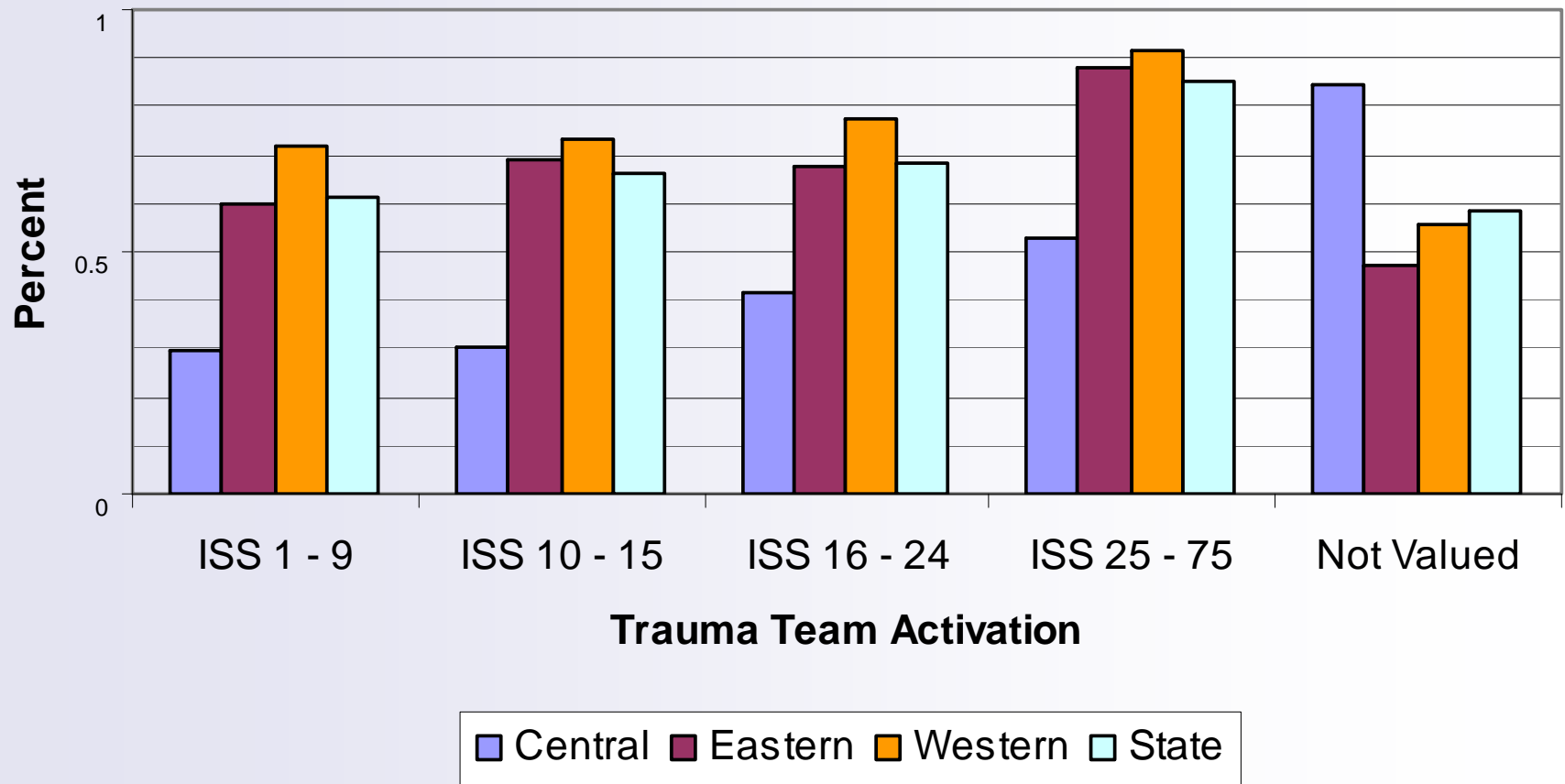
# Regional Patients by ISS



**N = 455 for qtr**

**MT STCC 1<sup>st</sup> Qtr 2007**

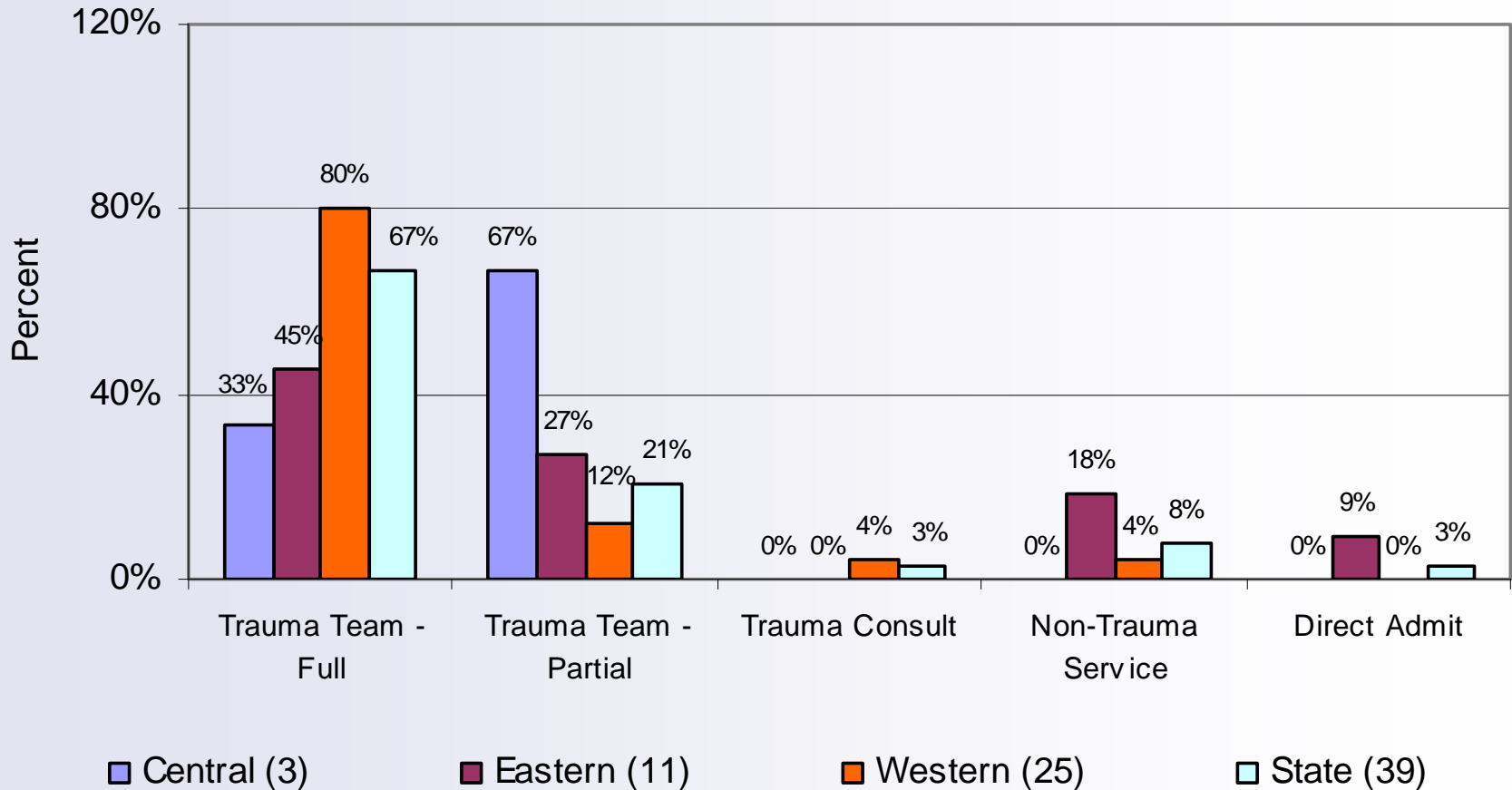
# Trauma Team Activation by ISS (Full or Partial)



N = 455 for qtr

MT STCC 1<sup>st</sup> Qtr 2007

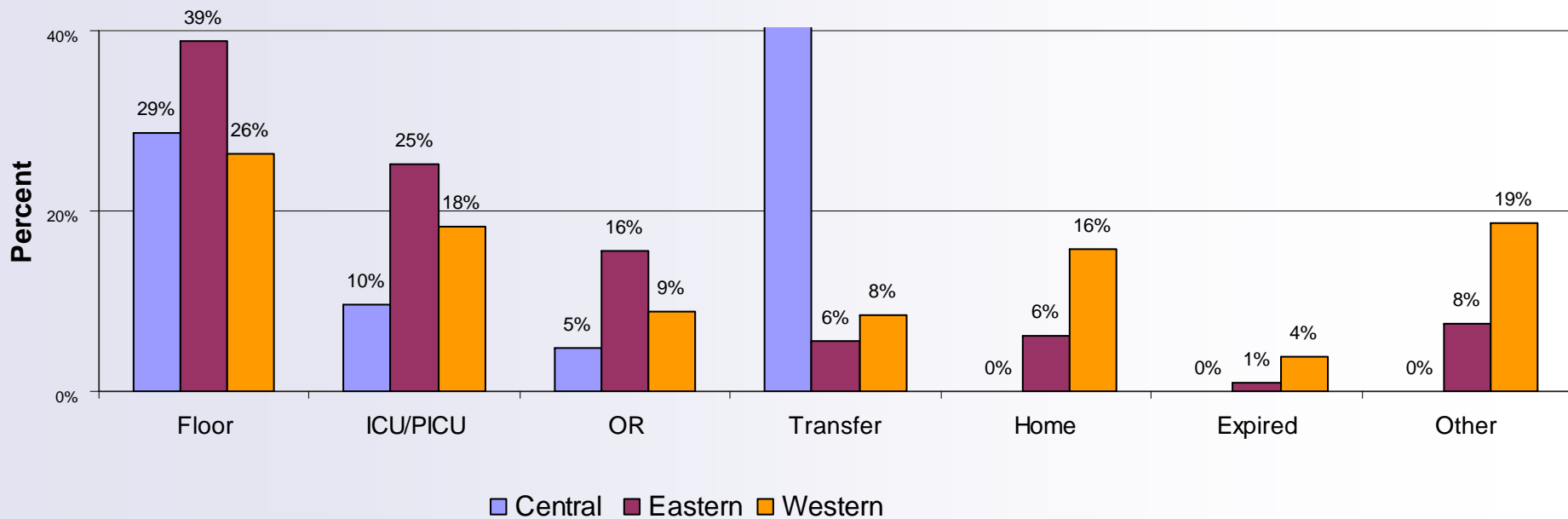
# Trauma Team Activation with ISS $\geq$ 25



**N = 455 for qtr**

**MT STCC 1<sup>st</sup> Qtr 2007**

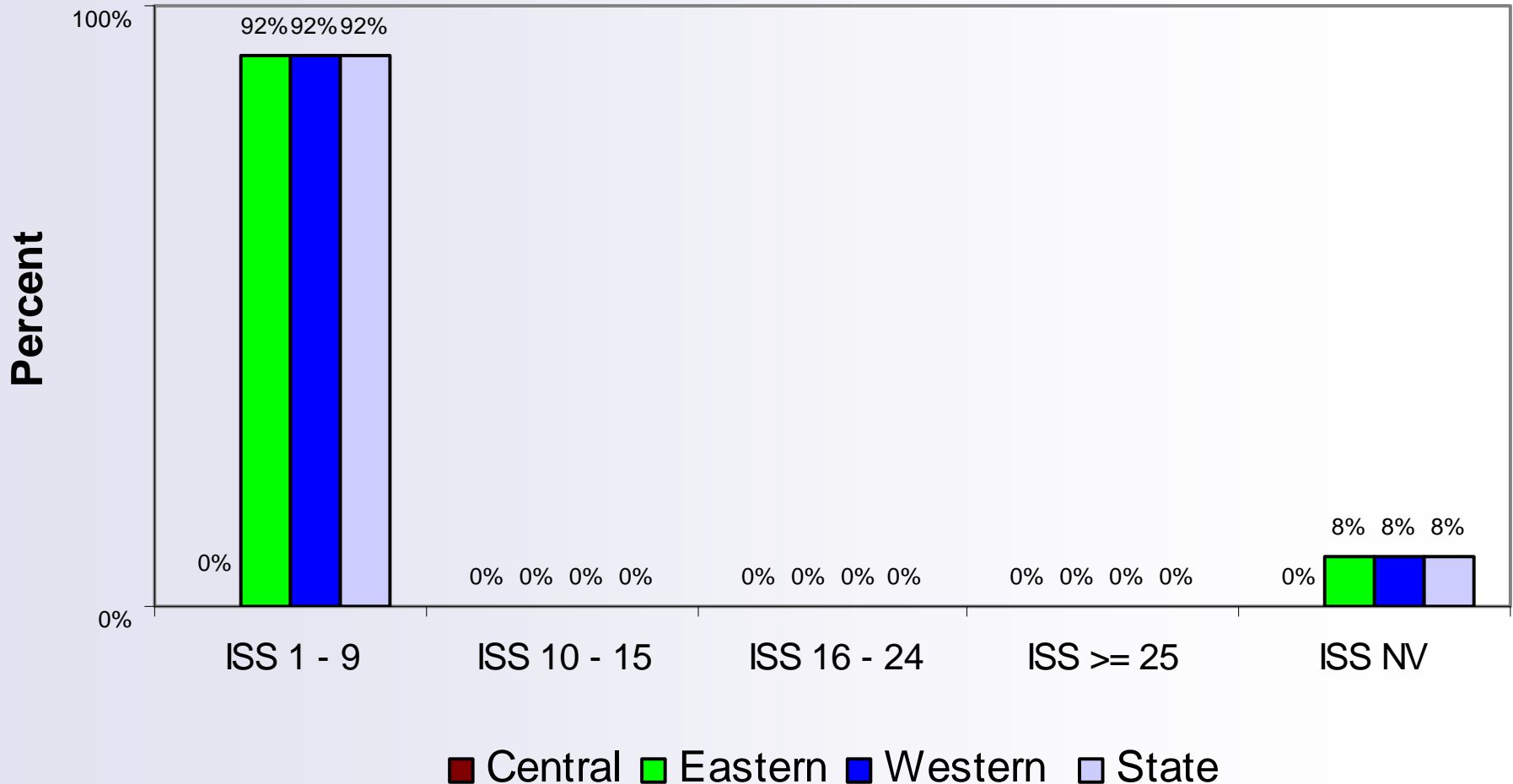
# ED Disposition



N = 455 for qtr

MT STCC 1<sup>st</sup> Qtr 2007

# ED to Home by ISS

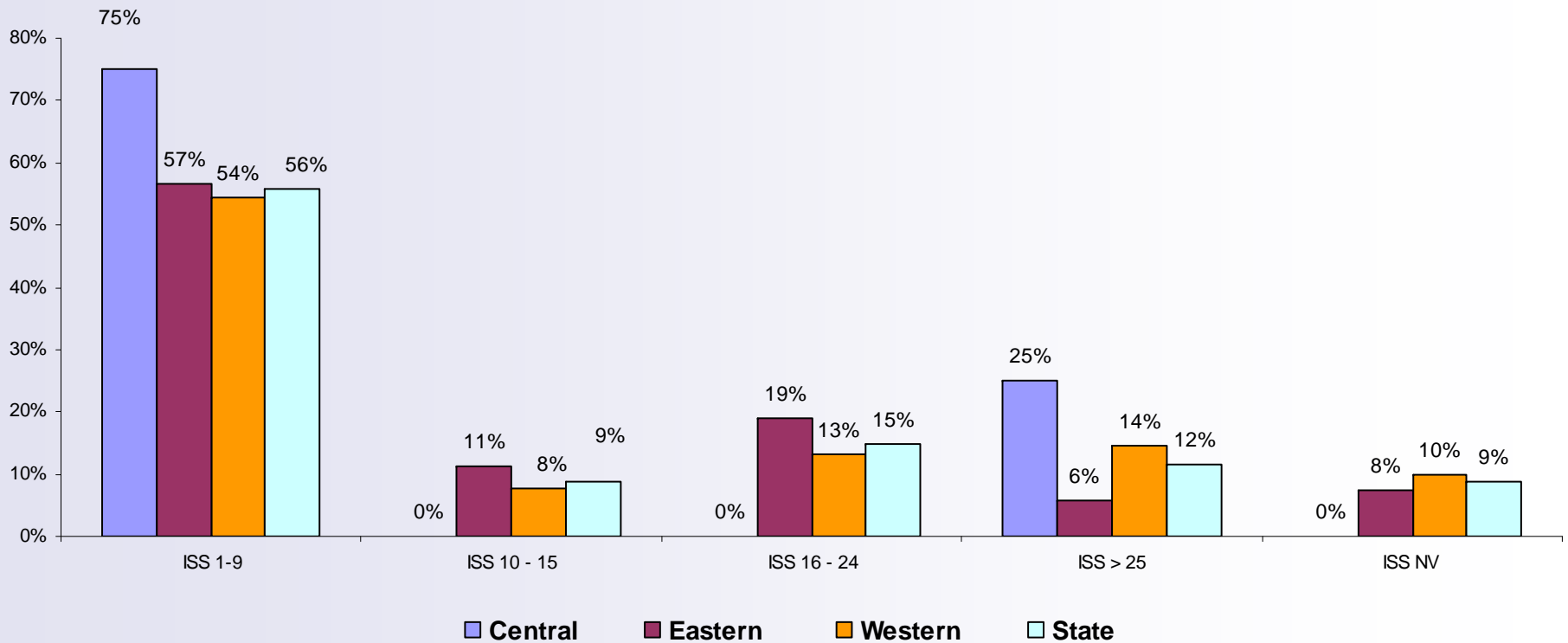


**N = 455 for qtr**

**MT STCC 1<sup>st</sup> Qtr 2007**

# ED LOS By ISS

## < 120 Mins (2hr)

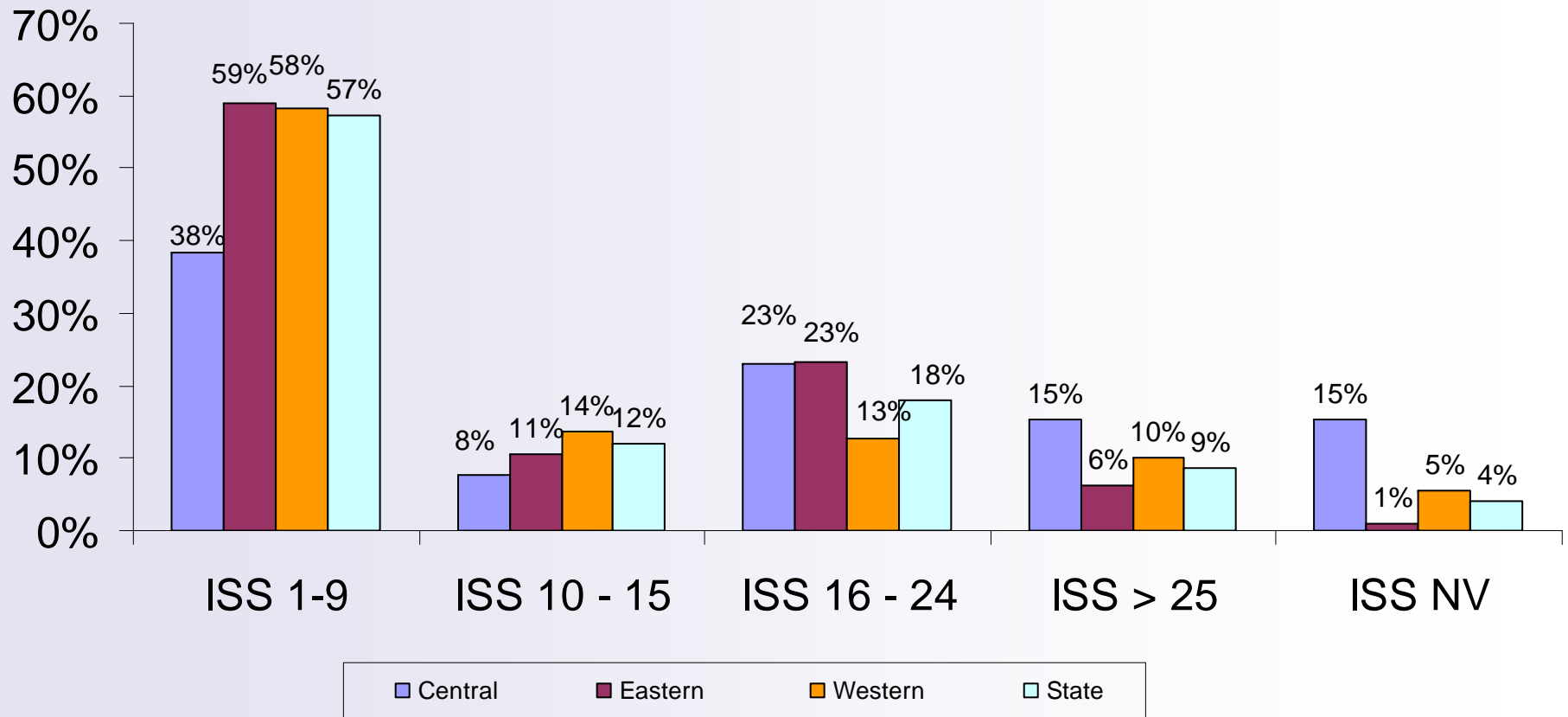


**N = 455 for qtr**

**MT STCC 1<sup>st</sup> Qtr 2007**

# ED LOS by ISS

## 120-239 Minutes (2-4hr)

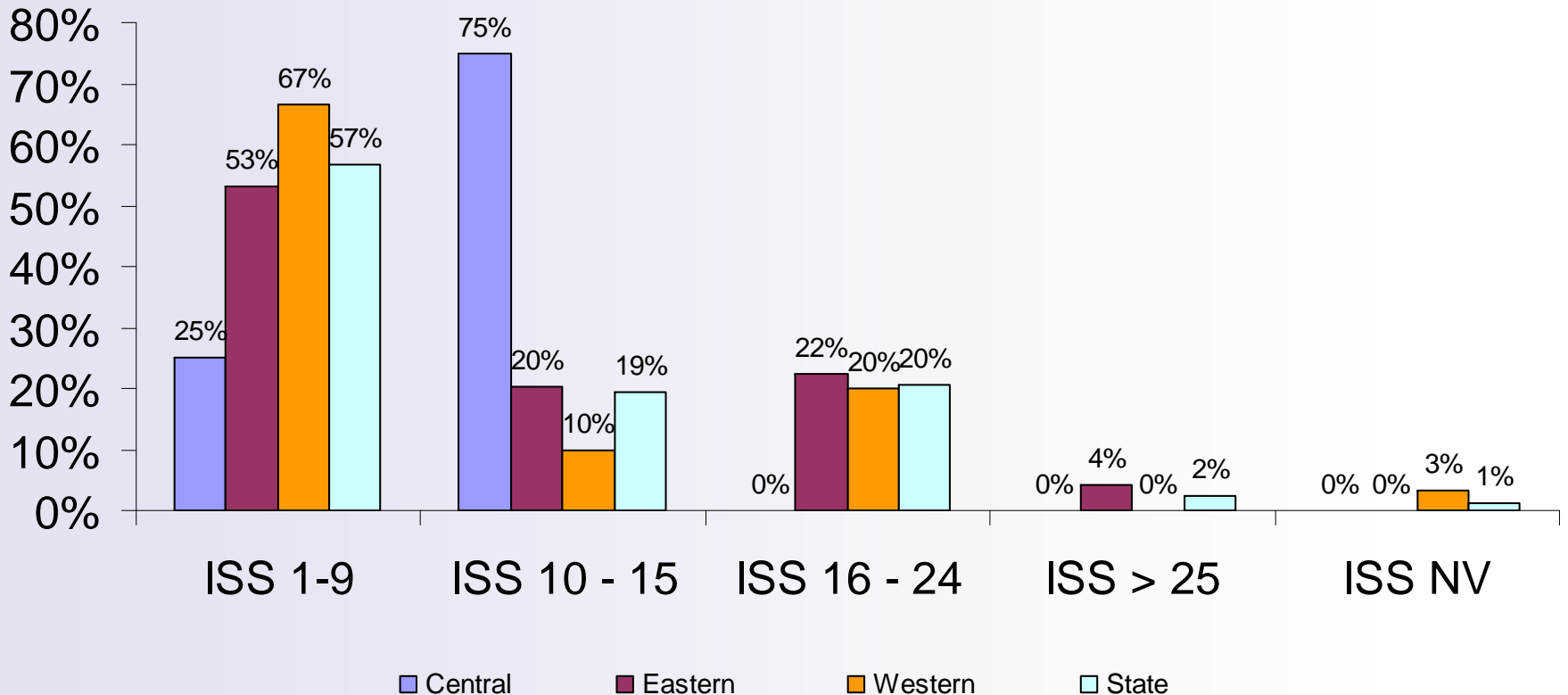


**N = 455 for qtr**

**MT STCC 1<sup>st</sup> Qtr 2007**

# ED LOS by ISS

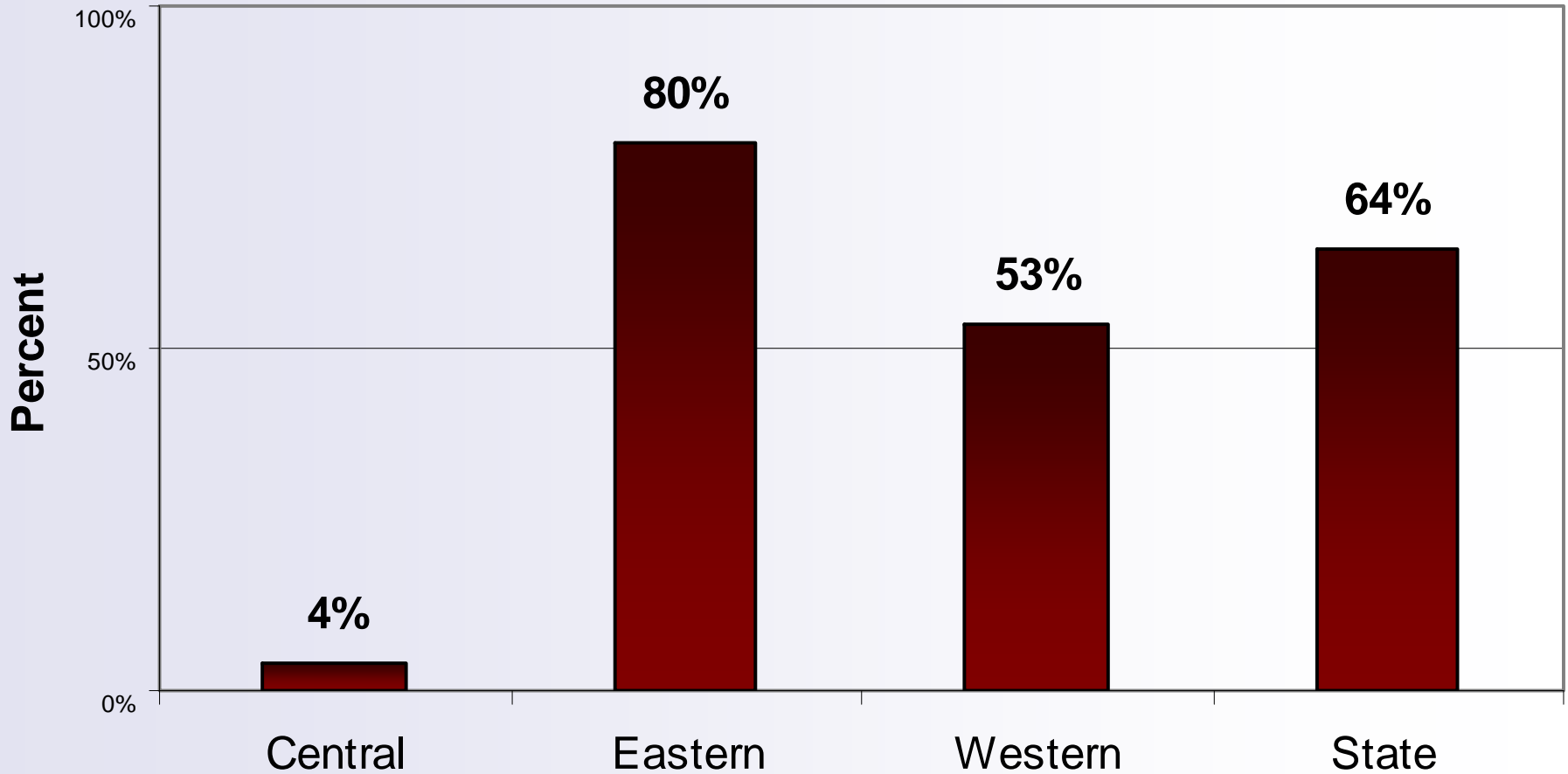
## > 239 Minutes (> 4hr)



N = 455 for qtr

MT STCC 1<sup>st</sup> Qtr 2007

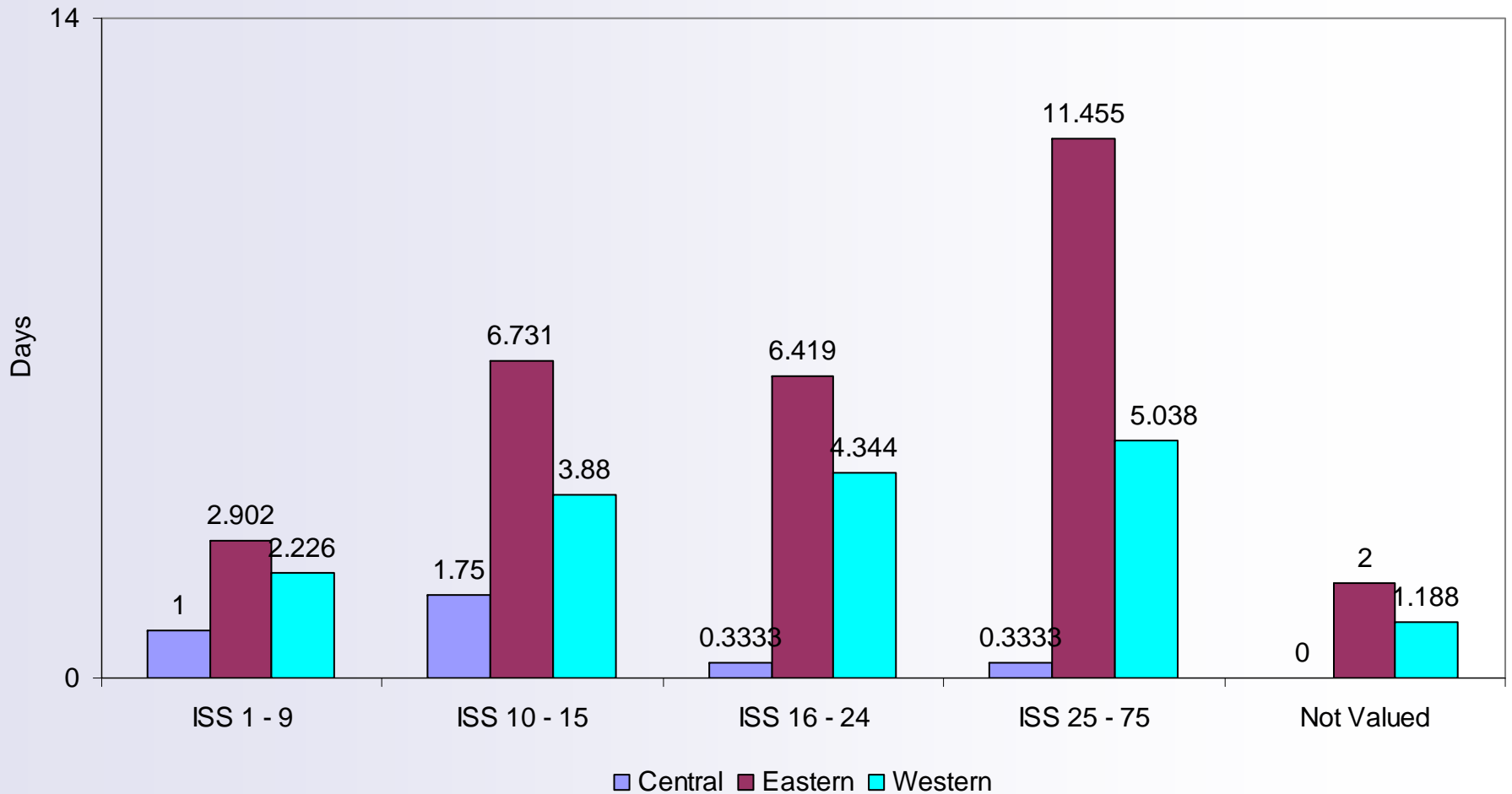
# Admits



**N = 455 for qtr**

**MT STCC 1<sup>st</sup> Qtr 2007**

# Avg. Hospital LOS by Region

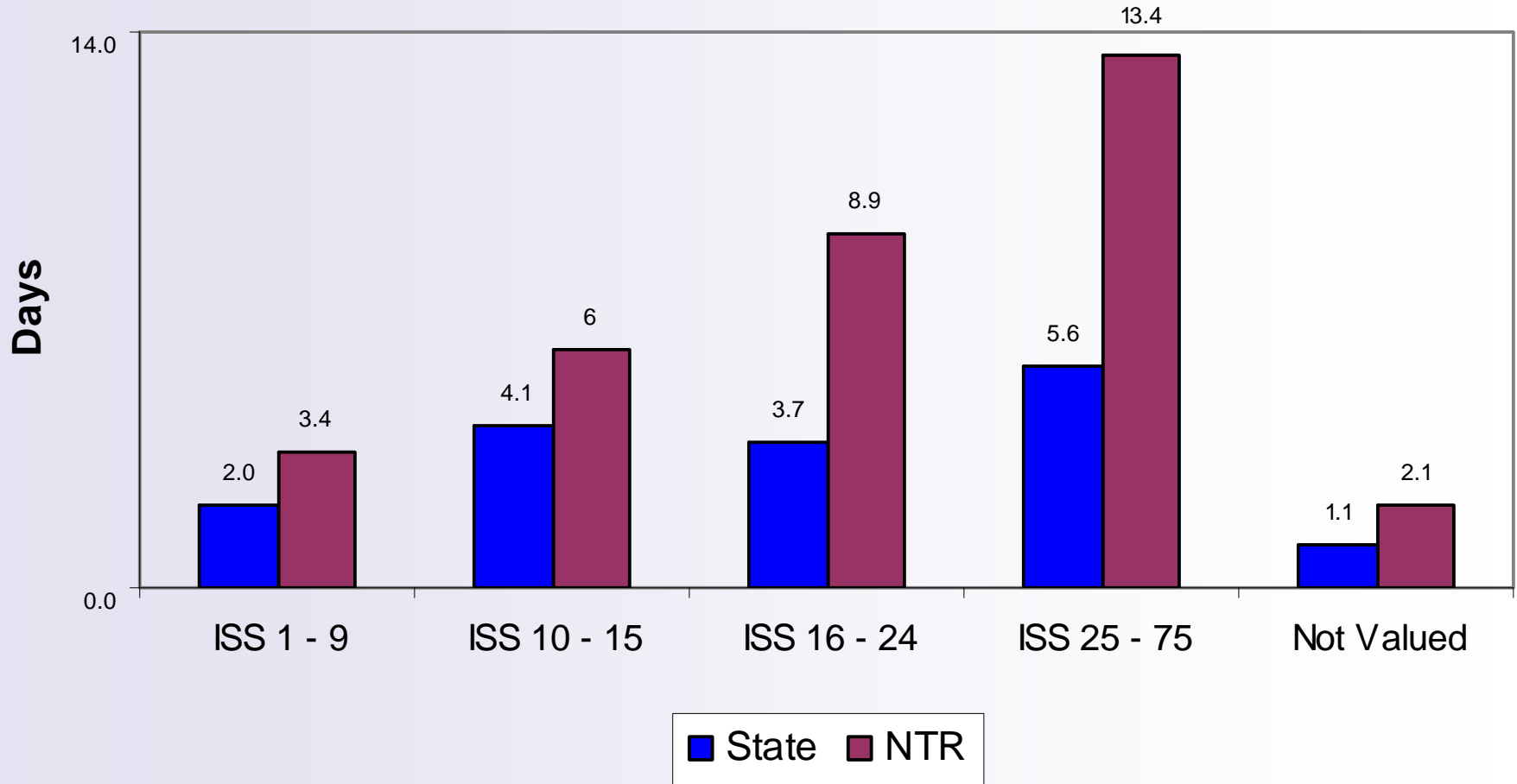


**N = 455 for qtr**

**MT STCC 1<sup>st</sup> Qtr 2007**

# Avg. Hospital LOS

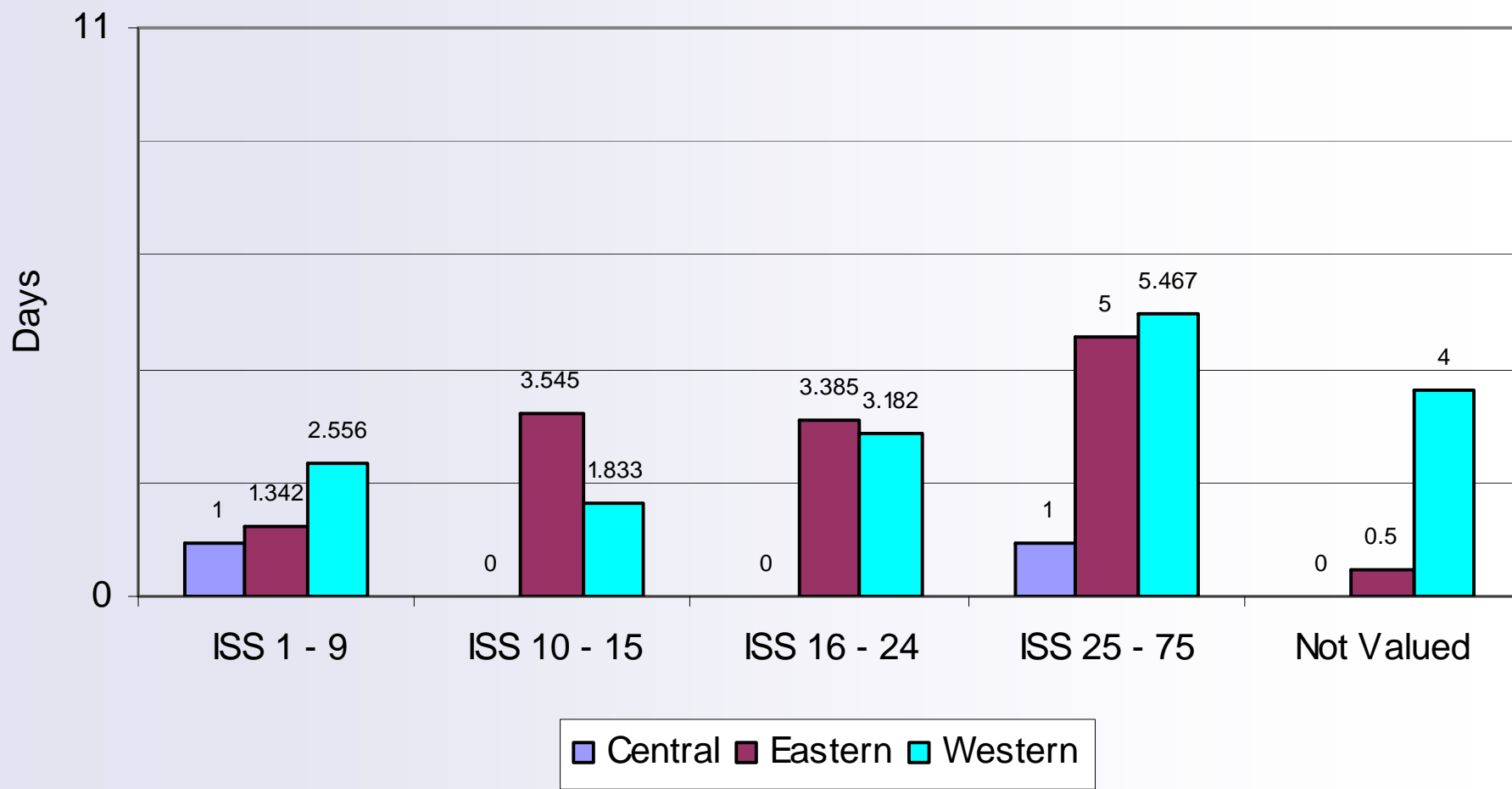
(comparing State and National Trauma Registry)



N = 455 for qtr

MT STCC 1<sup>st</sup> Qtr 2007

# Avg. ICU LOS by Region

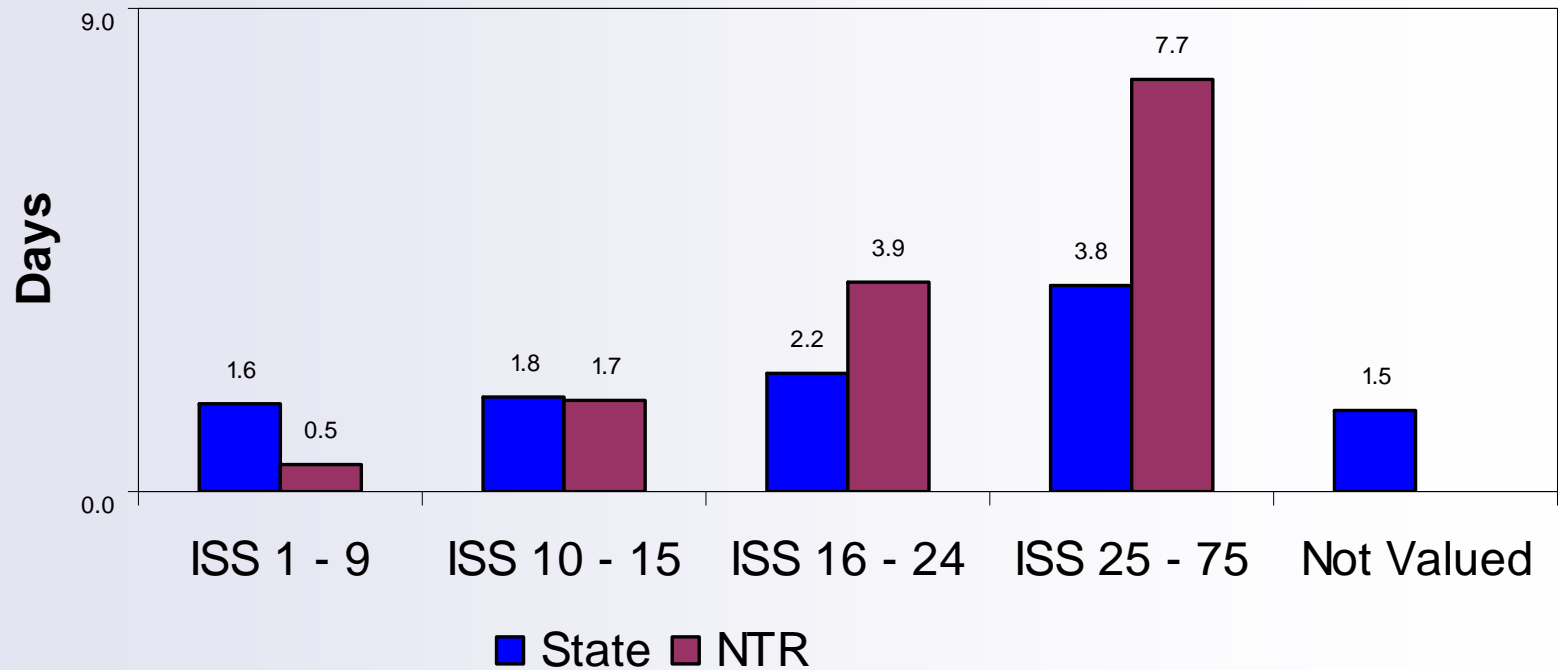


**N = 455 for qtr**

**MT STCC 1<sup>st</sup> Qtr 2007**

# Avg. ICU LOS

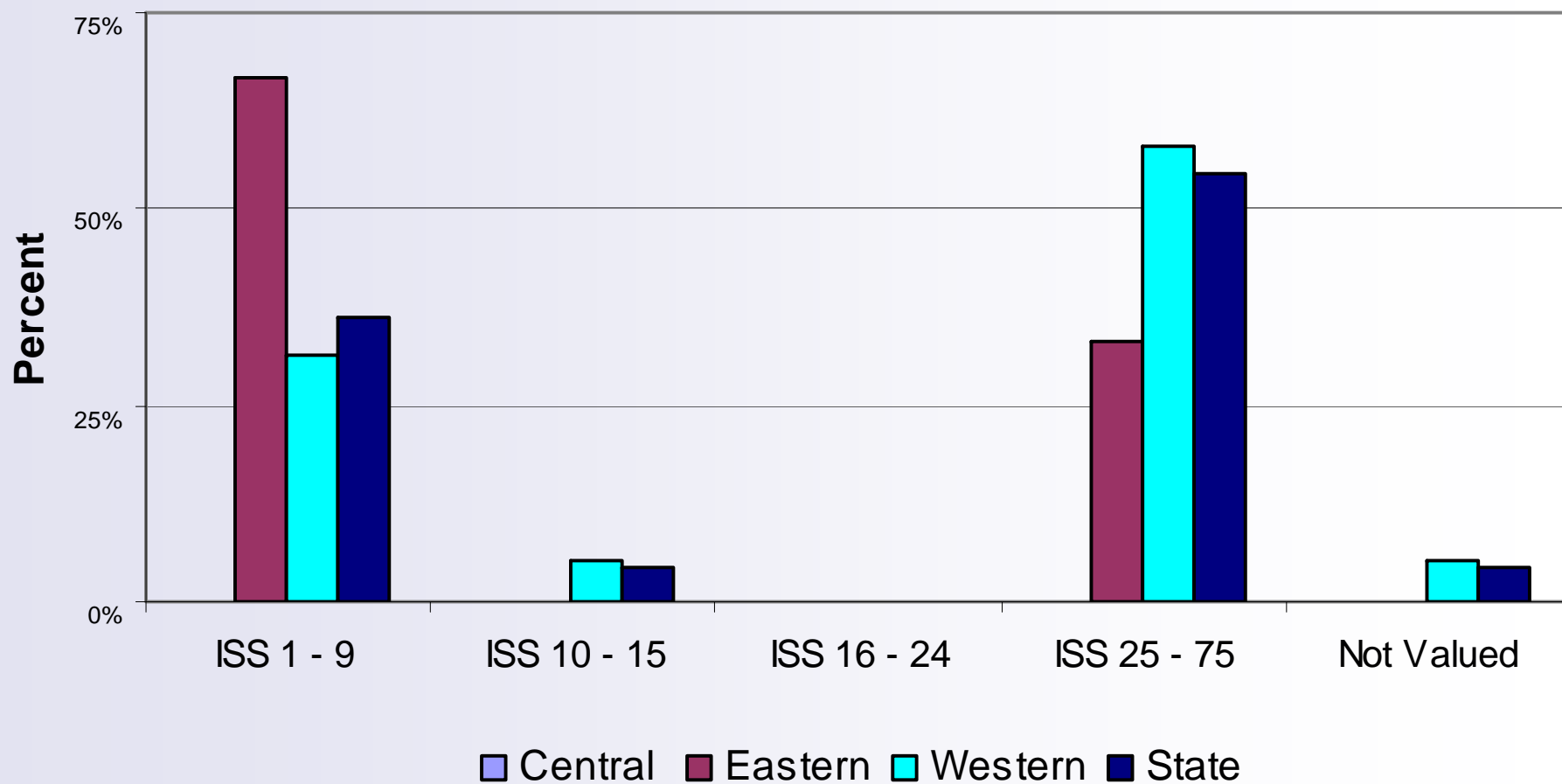
(comparing State and National Trauma Registry)



N = 455 for qtr

MT STCC 1<sup>st</sup> Qtr 2007

# Fatalities by ISS



**N = 455 for qtr**

**MT STCC 1<sup>st</sup> Qtr 2007**

# Fatalities (no DOS)

## Injury Causes Of Fatalities

**N = 22**

**MVC – 11 (50%)**

**SI GSW - 3 (14%)**

**Pedestrian - 2**

**Anoxia/Car into pond - 2**

**Assault/Stabbing - 2**

**Bicycle vs vehicle - 1**

**Falls – 1**

# Fatalities

**MVC : 11**

**+ SB**

**3**

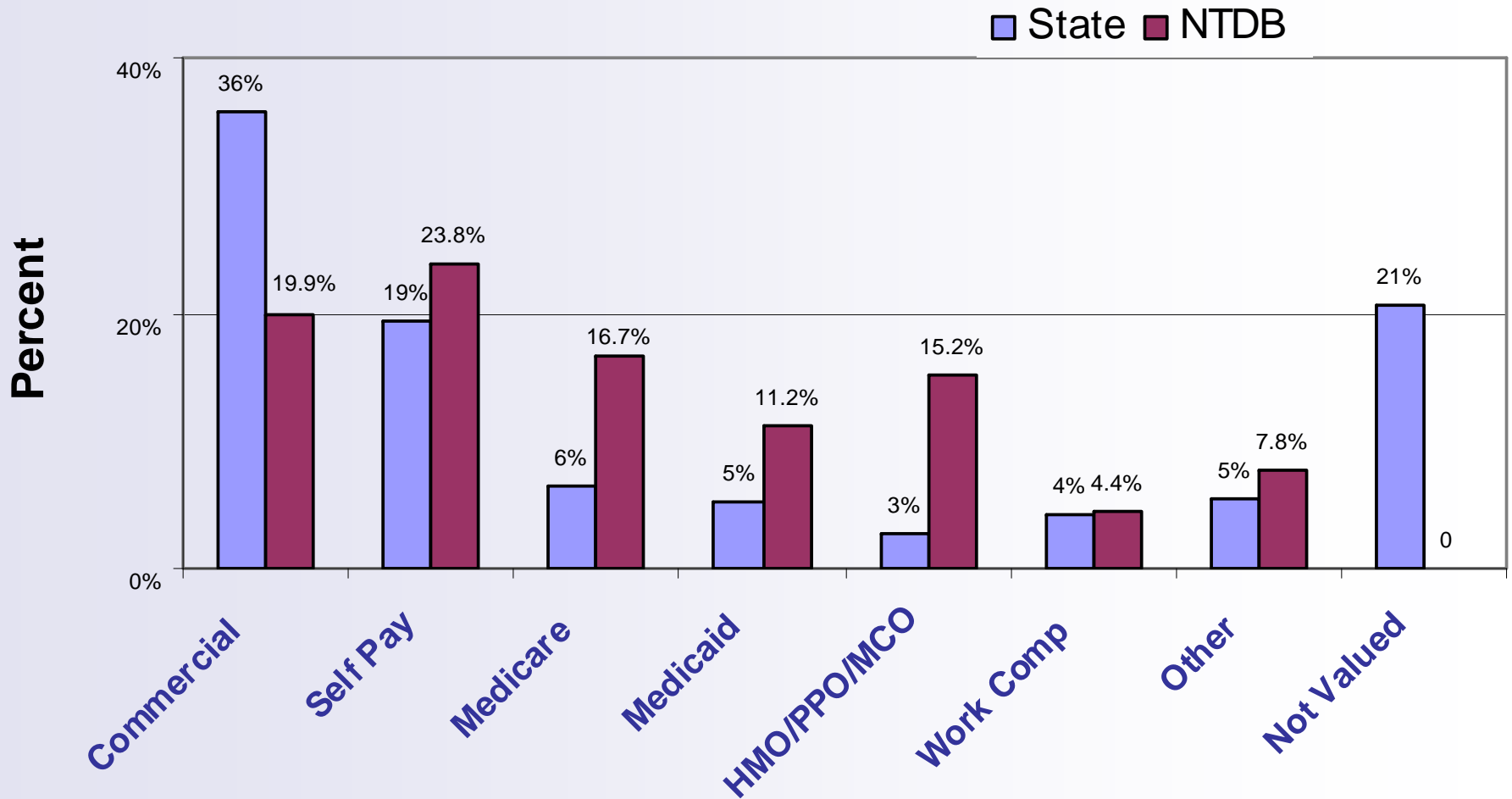
**- SB**

**7**

**UNK**

**1**

# Payors



N = 455 for qtr

MT STCC 1<sup>st</sup> Qtr 2007

# Patients Transferred Into MT

N= 8

□ CENTRAL (0)

□ EASTERN (6)

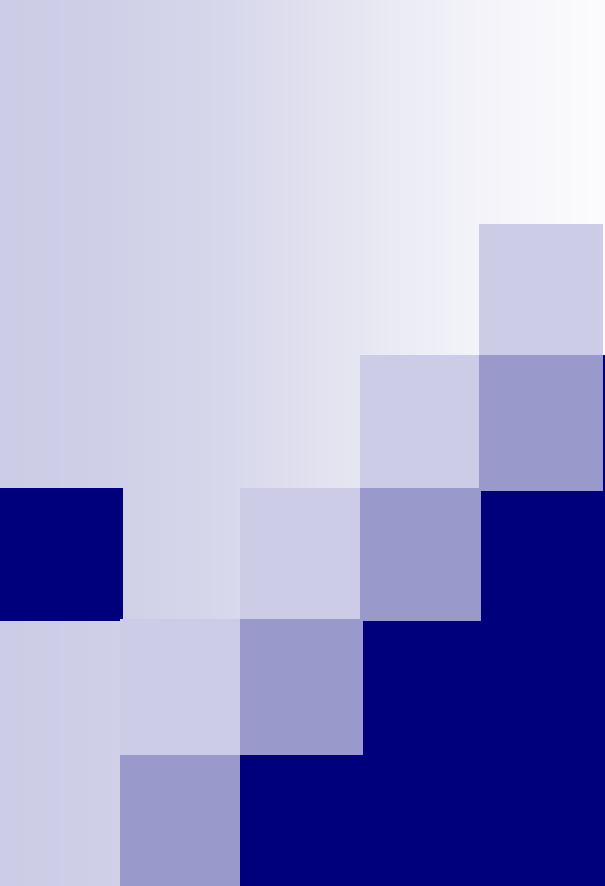
4 Wyoming Locations

□ WESTERN (2)

Both from Salmon, ID

# Pts Transferred Out of MT

N= 23 REGION	Where To	Injury Received	Phase of Care
Central- 1	VA/Psych, WY	SI Stab wound/Abd (superficial)	ICU
Eastern -9 (2 Peds)	2 – SLC (1 Ped) 2 – Denver (1Ped) 1- HBV Seattle  2 – Home (SNF) 2- InPt Rehab	Brain-3 Spine 1, Multiple 2, Burns-1 Ortho- 2	ED – 2 ICU/Hosp-7
Western- 13 2( Peds)	11-HBV Seattle (1 Ped)  1-Spokane (ped) 1=Post Falls	Brain/mult- 5 Spine/mult – 3 Burns – 2 Ortho- 1 Abd- 1 Pelvis- 1	ED –8 , ICU/ Hosp – 5



# Performance Indicators

1<sup>st</sup> Quarter 2007

January 1 – March 31, 2007

## PI # 1: Trauma Patients Transported per EMS Without Trip Report in the Medical Record

**Ambulance Transport: 323 (71%)**

**Report available: 216 (67%),**

**No Report: 102 (32%),**

**ND: 5 (1%)**

# PI # 1 cont'd

## Ambulance Transports

Central: 14

+ Report: 13, No Report 1

Eastern: 118

+ Report: 81 (69%), No Report: 37 (31%),

Western: 191

+ Report: 122 (64%), No Report 64 (34%), ND 5

## PI # 2: Transferred Trauma Patients w/ISS $\geq 15$ & time at first facility $\geq 6$ hrs

2 transfers w/ISS  $\geq 15$  & time @ facility  
 $\geq 6$  hrs

Avg. hours = 28.6 hrs

Both admitted to first facility prior to  
transfer

PI #3: ED time  $\geq$  2 hrs & ISS  $\geq$  15

89 patients (20 %)

- Average ED time: 214 min (3.56hr)
- Average ISS: 24

# ED Disposition for patient w/ED time $\geq 2$ hrs & ISS $\geq 15$

**N= 89**

<u>ED Disposition</u>		<u>Avg. ED time</u>
ICU	50%	3.19hr
OR	9%	3.89hr
Floor	17%	3.98hr
Step down	2%	4.19hr
Transferred to Acute Care 40%		3.06hr

Died:- 6% (2); ED/2,

# PI # 4:

Trauma patients who died with an ISS  $\leq$  15

N= 8

MVC: ISS 9, 13, 4, 9

- 2 anoxic, drowning (car into pond): ISS 1,1
- 1 stab wound: ISS 1
- 1 SI GSW/head ISS 1

Most under-coded due to limited visible injuries

## PI # 5: Patients w/GCS $\leq$ 9 & not intubated

N= 2

#1 patient: GCS 3/3; stab wound/chest; BVM/field; immediate ED thoracotomy; ventricle laceration; exanguinated, No ET

#2 patient; stab wound/abd transferred w/UNK GCS, **BA .376**, 2<sup>nd</sup> ED/ GCS 8; to OR in 42"; Disch w/GCS 15